

CASO<sup>®</sup>  
DESIGN

Instruction Manual

Cold Press Juicer Juice Fit Pro



Artikel-Nr.: 3511AUS

Congratulations on your purchase of a Caso Design® Cold Press Juicer, imported by Pro-Line Australia.

Please read through this notice and the instruction manual carefully before using or installing the product and ensure that both are kept in a safe place for future reference.

The system must be properly installed and located in accordance with the instructions before it is used.

During the setup of this product if you have any questions/ comments/ issues DO NOT RETURN TO STORE. FOR SERVICE AND TECHNICAL ADVICE VISIT [www.prolineaustralia.com.au/contact](http://www.prolineaustralia.com.au/contact)



**Electrical Requirements:**

Australia/ New Zealand 220-240V 50hz

Due to manufacturing alterations product may vary slightly from that pictured.

System Specifications	CASO Juice Fit Pro
Model Code	CP-3511
Article Number	3511AUS
Product External Measurement with Pusher	220 x 500 x 200 mm
Product Weight	4.7kg
Electrical data	220-240V~; 50Hz-60Hz
Power Consumption	250W
Max Running Time	20 minutes



Pro-Line Australia  
PO Box 4187  
Norwood South LPO  
South Australia 5067

Email: [info@prolineaustralia.com.au](mailto:info@prolineaustralia.com.au)  
Web: [www.prolineaustralia.com.au](http://www.prolineaustralia.com.au)

# Table of contents

<b>1</b>	<b>General</b> .....	<b>4</b>
1.1	Information on this manual .....	4
1.2	Warning notices .....	4
1.3	Limitation of liability .....	5
1.4	Copyright protection.....	5
<b>2</b>	<b>Safety</b> .....	<b>5</b>
2.1	Intended use .....	5
2.2	General Safety information.....	6
2.3	Sources of danger .....	7
2.3.1	Danger of injury .....	7
2.3.2	Dangers due to electrical power.....	8
<b>3</b>	<b>Commissioning</b> .....	<b>8</b>
3.1	Packaging safety information .....	8
3.2	Delivery scope and transport inspection .....	8
3.3	Unpacking .....	9
3.4	Setup location requirements .....	9
3.5	Electrical connection .....	9
<b>4</b>	<b>Design and Function</b> .....	<b>10</b>
4.1	Overview.....	10
4.2	Controls.....	11
4.3	Assembling.....	11
4.4	Rating plate.....	11
<b>5</b>	<b>Operation and Handling</b> .....	<b>12</b>
5.1	Before first use.....	12
5.2	Preparing the food.....	12
5.3	Hints for making of juice .....	12
5.4	Juicing food items.....	13
5.5	R function .....	13
5.6	After making juice.....	13
<b>6</b>	<b>Cleaning and Maintenance</b> .....	<b>14</b>
6.1	Safety information .....	14
6.2	Cleaning.....	14
<b>7</b>	<b>Troubleshooting</b> .....	<b>15</b>
7.1	Safety notices .....	15
7.2	Troubleshooting table .....	15
<b>8</b>	<b>Disposal of the Old Device</b> .....	<b>16</b>
8.1	Disposal of the packaging.....	16
<b>9</b>	<b>Guarantee</b> .....	<b>17</b>

# 1 General

Please read the information contained herein so that you can become familiar with your device quickly and take advantage of the full scope of its functions.

Your device will serve you for many years if you handle it and care for it properly. We wish you a lot of pleasure in using it!

## 1.1 Information on this manual

These operating instructions are a component of the juicer Juice Fit Pro (referred to hereafter as the Device) and provide you with important information for the initial commissioning, safety, intended use and care of the device.

The Operating Instructions must be available at all times at the device. This Operating Manual must be read and applied by every person who is instructed to work with the device:

- Commissioning,
- Troubleshooting and/or
- Operation,
- Cleaning

Keep the Operating Manual in a safe place and pass it on to the subsequent owner along with the device.

## 1.2 Warning notices

The following warning notices are used in the Operating Manual concerned here.

### DANGER

A warning notice of this level of danger indicates a potentially dangerous situation.

**If the dangerous situation is not avoided, this can lead to death or serious injuries.**

- ▶ Observe the instructions in this warning notice in order to avoid the danger of death or serious personal injuries.

### WARNING

A warning notice of this level of danger indicates a possible dangerous situation.

**If the dangerous situation is not avoided, this can lead to serious injuries.**

- ▶ Observe the instructions in this warning notice in order to avoid the personal injuries.

### ATTENTION

A warning notice of this level of danger indicates a possible dangerous situation.

**If the dangerous situation is not avoided, this can lead to slight or moderate injuries.**

- ▶ Observe the instructions in this warning notice in order to avoid the personal injuries.

### PLEASE NOTE

A notice of this kind indicates additional information, which will simplify the handling of the machine.

### 1.3 Limitation of liability

All the technical information, data and notices with regard to the installation, operation and care are completely up-to-date at the time of printing and are compiled to the best of our knowledge and belief, taking our past experience and findings into consideration. No claims can be derived from the information provided, the illustrations or descriptions in this manual.

The manufacturer does not assume any liability for damages arising as a result of the following:

- Non-observance of the manual
- Uses for non-intended purposes
- Improper repairs
- Technical alterations, modifications of the device
- Use of unauthorized spare parts

Modifications of the device are not recommended and are not covered by the guarantee. All translations are carried out to the best of our knowledge. We do not assume any liability for translation errors, not even if the translation was carried out by us or on our instructions. The original German text remains solely binding.

### 1.4 Copyright protection

This document is copyright protected.

CASO GmbH reserves all the rights, including those for photomechanical reproduction, duplication and distribution using special processes (e.g. data processing, data carriers, data networks), even partially. Subject to content and technical changes.

## 2 Safety

This chapter provides you with important safety notices when handling the device. The device corresponds with the required safety regulations. Improper use can result in personal or property damages.

### 2.1 Intended use

This device is intended for use in the household and for similar applications such as:

- Extracting juice from vegetables and/or fruit

This device is intended for use in the household and for similar applications such as:

- in kitchens for employees in shops, offices, and other commercial areas;
- in B&Bs,
- in agricultural estates;
- by customers in hotels, motels and other residential establishments.

Uses for a different purpose or for a purpose which exceeds this description are considered incompatible with the intended or designated use.

#### **WARNING**

#### **Danger due to unintended use!**

Dangers can emanate from the device if it is used for an unintended use and/or a different kind of use.

**⚠ WARNING**

- ▶ Use the device exclusively for its intended use.
- ▶ Observe the procedural methods described in this Operating Manual.

Claims of all kinds due to damages resulting from unintended uses are excluded. The User bears the sole risk.

## 2.2 General Safety information

**PLEASE NOTE**

**Please observe the following general safety notices with regard to the safe handling of the device.**

- ▶ Children must not use this appliance. Keep the appliance and its power supply unit away from children.
- ▶ The device may be used by individuals with reduced physical, sensory or mental capabilities or a lack of experience and / or knowledge of their use if they are supervised or have been instructed at to the safe use of the device and have understood the resulting hazards.
- ▶ Children shall not play with the appliance.
- ▶ Use the appliance only as described in the user's guide to avoid possible injury from misuse.
- ▶ Operate the appliance only in dry indoor areas.
- ▶ Do not operate the appliance unattended.
- ▶ Do not use the appliance:
  - if the appliance itself or parts are damaged,
  - if the power cord or plug is damaged,
  - if the appliance has been dropped.
- ▶ Make sure that the power socket is easily accessible so that you can quickly unplug the device if required.
- ▶ Do not make any modifications to the appliance or the power cord. Only have repairs carried out by a specialist workshop, as appliances that have not been repaired properly endanger the user. Please also observe the enclosed warranty conditions.
- ▶ Only use the device with original accessories.
- ▶ Place the appliance on a stable, level surface. Ensure sufficient distance between the appliance and strong heat sources such as hotplates, heating pipes, etc.

**PLEASE NOTE**

- ▶ Do not clean the appliance with hard, scratchy or abrasive cleaning agents such as steel wool or similar.
- ▶ Cleaning and user maintenance shall not be made by children.
- ▶ Defective components must always be replaced with original replacement parts. Only such parts will guarantee that the safety requirements are fulfilled.
- ▶ Carefully clean all components that will come in contact with food before first use.
- ▶ Use the device continuously for a maximum of 20 minutes. Then let the device cool down for 10 minutes.
- ▶ Do not immerse the appliance in water or other liquids. Do not put it in the dishwasher.
- ▶ Do not overload the device and do not let it operate un-loaded.
- ▶ Be sure the parts are properly assembled to original base and in place.

**2.3 Sources of danger****2.3.1 Danger of injury**** WARNING**

**Careless use of the appliance may result in injury.** Note the following warnings to avoid injury.

- ▶ Never use your finger or tools to push ingredients deeper while the device is running. Always use the pusher for this purpose.
- ▶ Disconnect the device from mains power if it is unsupervised; before assembling it; when changing over accessories and when disassembling or cleaning it.
- ▶ Turn the device off and disconnect it from mains power before changing over accessories or installing spare parts which move during operation.
- ▶ Stop processing of food immediately if rotating accessories no longer turn or only turn with difficulty and unplug the device.
- ▶ Be sure to turn switch to OFF position after each use of your device.

**⚠ WARNING**

- ▶ Do not put your fingers or other objects into the hopper during operation. If there is food stuck in the hopper, only use the pusher or another piece of fruit/vegetable to push it down or use the R-function to release the blockade.

**2.3.2 Dangers due to electrical power****⚠ DANGER****Mortal danger due to electrical power!**

Mortal danger exists when coming into contact with live wires or subassemblies! Observe the following safety notices to avoid dangers due to electrical power:

- ▶ If the power cord of this appliance is damaged, it must be replaced by the manufacturer or its customer service or a similarly qualified person in order to avoid hazards.
- ▶ Do not open the housing on the device under any circumstances. There is a danger of an electrical shock if live connections are touched and the electrical or mechanical structure is altered. In addition, functional faults on the device can also occur.
- ▶ Do not immerse the appliance in water for cleaning.

**3 Commissioning**

This chapter provides you with important safety notices during the initial commissioning of the device. Observe the following notices to avoid dangers and damages:

**3.1 Packaging safety information****⚠ WARNING**

- ▶ Do not allow children to play with packaging materials due to risk of suffocation.

**3.2 Delivery scope and transport inspection**

The device includes the following components:

- hopper
- pressure auger
- residue container
- motor unit
- operating manual
- pusher
- juicing container
- juice container
- cleaning brush



**PLEASE NOTE**

- ▶ Examine the shipment to ensure the unit and manual are included and inspect the unit for any visible damage.
- ▶ Immediately notify the carrier and/or the supplier about an incomplete shipment or any damage as a result of inadequate packaging or mishandling.

### 3.3 Unpacking

Carefully remove the packaging material and unit from the carton.

**PLEASE NOTE**

- ▶ If possible, keep the original packaging for the duration of the guarantee period in the event a return is necessary.

### 3.4 Setup location requirements

In order to ensure the safe and trouble-free operation of the device, the setup location must fulfil the following prerequisites:

- Place the device on a firm and even work surface.
- Choose the setup location in such a way that children cannot reach the device.
- The device is not intended to be installed in a wall or a built-in cupboard.
- Do not use the device outdoors.
- The device requires adequate air circulation (minimum distance 15 cm).
- Do not set up the device in a hot, wet or extremely damp environment or near flammable material.
- The installation and assembly of this device in non-stationary setup locations (e.g. on ships) must be carried out by specialist companies / electricians, provided they guarantee the prerequisites for the safe use of this device.

### 3.5 Electrical connection

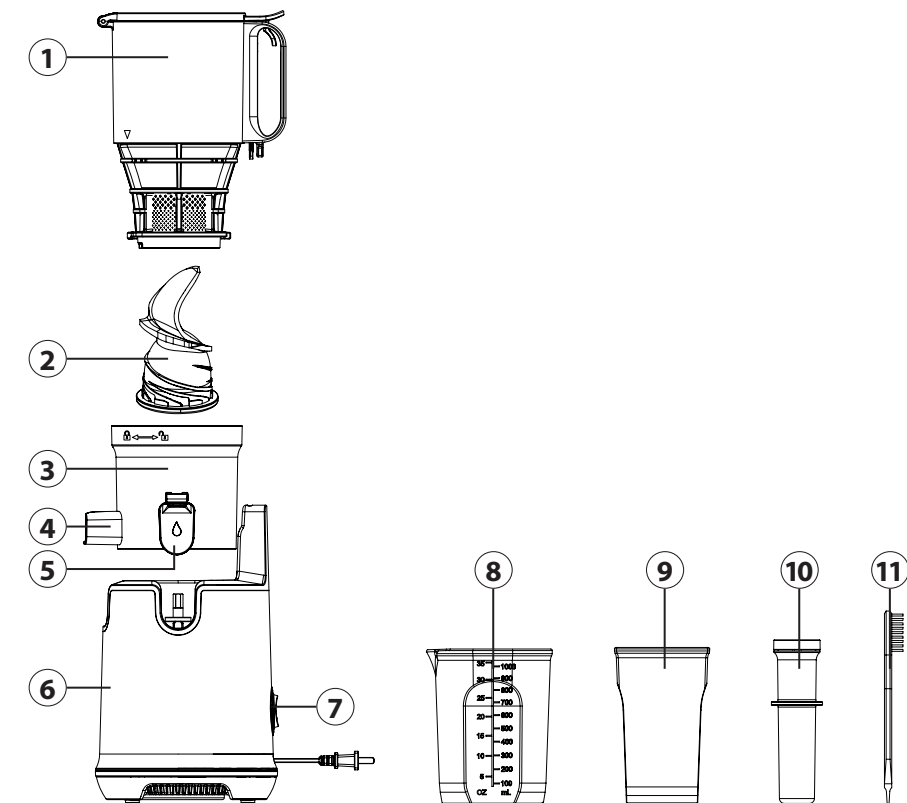
In order to ensure the safe and trouble-free operation of the device, the following instructions must be observed for the electrical connection:

- Before connecting the device, compare the connection data (voltage and frequency) on the rating plate with those of your electrical network. This data must agree in order that no damages occur in the device. If in doubt, ask your qualified electrician.
- The connection between the device and the electrical network may employ a 3 meter long (max.) extension cable with a cross-section of 1.5 mm<sup>2</sup>. The use of multiple plugs or gangs is prohibited because of the danger of fire that is involved with this.
- Make sure that the power cable is undamaged and has not been installed under the ice maker or over hot or sharp surfaces.
- The electrical outlet must be protected by a safety switch.
- The electrical safety of the device is only guaranteed if the device is connected to a properly installed protective conductor system. If in doubt, have the house installation checked over by a qualified electrician. The manufacturer cannot be made responsible for damages that are caused by a missing or damaged protective conductor.

## 4 Design and Function

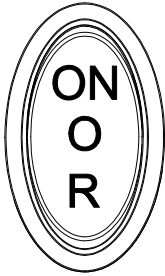
This chapter provides you with important safety notices on the design and function of the device.

### 4.1 Overview



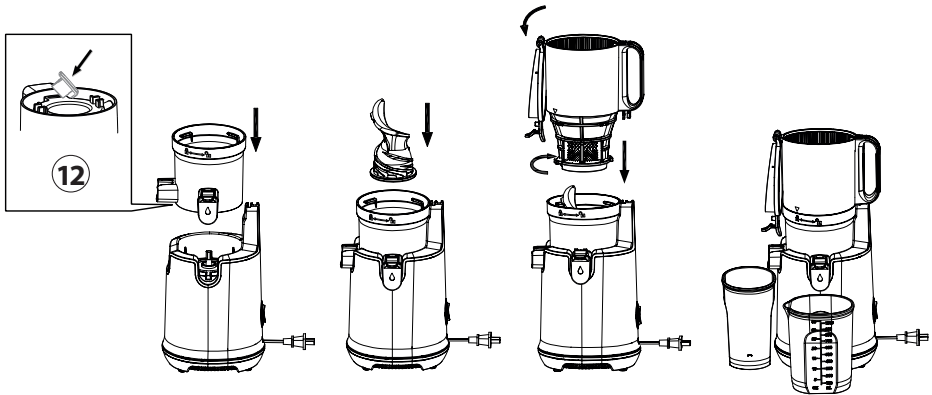
- ① hopper with lid
- ② pressure auger
- ③ juicing container
- ④ pulp outlet
- ⑤ juice outlet with lock
- ⑥ motor unit
- ⑦ ON/OFF/R-switch
- ⑧ juice container
- ⑨ residue container
- ⑩ pusher
- ⑪ cleaning brush



## 4.2 Controls



ON = Juicing auger will start and push food down.  
 O = Stops operation.  
 R = Reverses auger direction and pushes food back.

## 4.3 Assembling



1. Place the motor unit (6) on a flat surface.
2. Check that the silicone plug (12) is placed in the pulp outlet (4) (see the underside of the juicing container (3)).
3. Place the juicing container (3) on the motor unit (6), ensuring that the pulp outlet and juice outlet are both located in the openings.
4. Place the juicing auger in the juicing container, press it down and rotate until it clicks into place.
5. Place the hopper on the appliance. The arrow ▼ on the front should point to the  symbol on the juicing container.
6. Turn the hopper until the arrow ▼ points to the  symbol. **The lid must be open so that the hopper can click into place correctly.**
7. Place the pulp container under the pulp outlet and the juice container under the juice outlet.

## 4.4 Rating plate

The rating plate with the connection and performance data can be found beneath the device.

## 5 Operation and Handling

This chapter provides you with important notices with regard to operating the device. Observe the following notices to avoid dangers and damages:

### WARNING

- ▶ Do not leave the device unsupervised when it is in operation, so that you can intervene quickly in the event of dangers.

### PLEASE NOTE

- ▶ The device will stop for your safety when you lift the lid during operation.
- ▶ Device will not operate if parts are not assembled properly.

### 5.1 Before first use

Clean the device, see “cleaning”.

### 5.2 Preparing the food

- Remove stones and seeds (for example: apricots).
- Remove hard inedible peel (for example: melons). Peel citrus fruits and remove the bitter white skin.
- Beans and cereals must first be soaked overnight or be cooked.
- Frozen fruit must be thawed for approx. 15 minutes.
- Extremely hard foods, such as nuts or sugarcane, or oily foods should not be used.
- Foods with low juice, e.g. bananas can be used for sorbet. When juicing these fruits they should be mixed with foods with plenty of juice.
- Cut fibrous foods (for example: celery) into small pieces and roll leaves (for example: spinach) into spirals before juicing them. It is better to mix fibrous foods with foods with plenty of juice.

### 5.3 Hints for making of juice

#### PLEASE NOTE

- ▶ If you want to juice for example a whole apple or pear then lift the lid, put the fruit into the hopper and then close the lid again.
- ▶ It is recommended that juice is consumed within 48 hours after extracting. With vacuum sealing you can prolong the shelf-life.
- ▶ There can be different layers in the juice. If there is any excessive amount of foam, use a mesh strainer to separate it from the juice.
- ▶ Do not apply pressure when filling in the food, otherwise the pressure auger could be blocked.
- ▶ For production of mixed juice close the juice outlet so that the juice remains in the middle part and intermix.
- ▶ You can make different juices fast after each other when you let one glass of water (with closed lock of juice outlet) run through the device. So you can flush away residues and aromas.

**PLEASE NOTE**

- ▶ Leave lock open when juicing ingredients that create excessive foam during extraction (e.g. apples, celery).
- ▶ Pay close attention when operating with the lock of juice outlet closed. Juice may overflow if there is too much juice collected in the middle part.

**5.4 Juicing food items****⚠ WARNING**

- ▶ Do not remove the hopper with lid during use.
- ▶ Do not put hand or any object into the device or hopper, danger of injury exists or the device may be damaged.
- ▶ Do not touch the power cord with wet hands. It may cause electrical shock, short-circuit or fire.
- ▶ If necessary, use the pusher to gently feed food into the juicing auger.
- ▶ Do not reinsert the extracted pulp into the juicer.
- ▶ Do not overload the device and do not use it without food. It could be damaged.
- ▶ Do not use the appliance continuously for more than 20 minutes. After use for 20 minutes, let the appliance cool down for 10 minutes before using it again.
- ▶ If food gets stuck in the hopper, use the pusher or another piece of fruit/vegetable to push it down.

1. Make sure that the On/Off switch is turned to "O".
2. Plug the device in, after you have properly installed the device.
3. Prepare the food.
4. Insert the food items into the hopper and close the lid.
5. Switch to ON position, to start the operation.
6. Open the juice outlet.

**5.5 R function**

Use the R switch if the juicing auger gets blocked or the hopper cannot be removed when taking the appliance apart. The R switch turns the juicing auger in the opposite direction, loosening food which has got blocked by pushing it back up the tube.

**5.6 After making juice**

1. Let the device operate as long as all food needs to be juiced completely.
2. Place an empty container under the juice outlet and operate the device with a little water to rinse it.
3. Close the juice outlet to prevent dripping.
4. Turn the appliance off ("O") and remove the plug from the socket.
5. Disassemble the device and proceed as described under "cleaning".
6. If you cannot disassemble the hopper immediately, then use the "R" function.

## 6 Cleaning and Maintenance

This chapter provides you with important notices with regard to cleaning and maintaining the device. Please observe the notices to prevent damages due to cleaning the device incorrectly and to ensure trouble-free operation.

### 6.1 Safety information

#### **⚠ ATTENTION**

**Please observe the safety instructions, before cleaning your device:**

- ▶ Unplug the device when not in use and before any cleaning.
- ▶ Never immerse the motor unit, cord or plug in water or other liquids and do not place in the dishwasher.
- ▶ Do not use iron brush, abradant kitchen cleaner, or sharp cleaning tool for cleaning.
- ▶ Do not use any aggressive or abrasive cleaning agents or solvents.

### 6.2 Cleaning

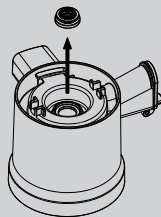
#### **PLEASE NOTE**

- ▶ You can use the provided cleaning brush.
- ▶ Motor unit and cable should not come into contact with water. Wipe the motor unit and the cable only with a damp soft cloth.
- ▶ Immediately clean the device after each use. If remaining residue in the device dries up, it can make disassembling and cleaning difficult. The residues may affect performance in future uses.

1. Empty the residue container.
2. Remove the silicone plug (12) from the pulp outlet on the underside of the juicing container.
3. Remove any food residues from all the parts and rinse everything, except the motor unit, thoroughly under running water.
4. Use the cleaning brush and a mild washing-up liquid for thorough cleaning.
5. In particular, make sure to clean the underside of the juicing auger thoroughly.
6. After cleaning, use a dry cloth to dry all parts thoroughly. Completely reassemble the appliance and store it in a dry, safe place.

#### **PLEASE NOTE**

- ▶ If necessary, remove the silicone ring from the centre of the juicing container for cleaning.



## 7 Troubleshooting

This chapter provides you with important notices with regard to operating the device. Observe the following notices to avoid dangers and damages:

### 7.1 Safety notices

#### ATTENTION

- ▶ Repairs of electrical appliances must be carried out by qualified person who are trained by the manufacturer.
- ▶ Repairs performed by untrained persons may result in considerable hazards for the user and damage the machine.

### 7.2 Troubleshooting table

Problem	Solution
The device does not start.	Please check whether the plug is properly plugged in.
	Please check whether the device is assembled correctly and lid is closed.
Very little juice and pulp is still very wet.	Check whether stale food is used.
	Food must be fresh. Prepared / chopped food which has been stored in the fridge for a long time must be soaked in water for at least 10 minutes before it is juiced.
	Different ingredients hold different amounts of fluid that will yield different amounts of juice.
	Check if the appliance has been assembled correctly and that the silicone plug on the underside of the juicing container has been inserted into the pulp outlet correctly.
Strange noises during juicing.	If juicing ingredients with small seeds, after a few servings, it may reduce the juice yield. For best result, disassemble and wash the top-set (without motor block) in between juicing.
	Food is rubbing against the juicing auger and the side of the juicing container during operation. Cracking and squeaking noises are normal.
The device stops during operation.	Check whether too much food is used.
	Check whether the food contains hard cores.
	Use the R switch to loosen any blockage which may have occurred.
There is too much pulp in the juice.	When continuously juicing, and depending on the ingredient, the juice may contain a lot of fine pulp.
	Strain the juice through a sieve to remove unwanted pulp.
	If too much food is put into the juicer at once, then this can make the appliance stop during operation and result in a lot of pulp in the juice. Put food into the juicer gradually.

The hopper cannot be attached correctly.	Make sure that the juicing auger has clicked into place fully. If hasn't, then you will not be able to attach the hopper correctly.
Dying of the plastic parts.	<p>After juicing, if the juicer is not cleaned right away, the remaining pulp inside the top-set can dry up which can make disassembling and cleaning hard. This can also affect the juicer's performance and color.</p> <p>Ingredients which are rich in colorants, for example carrots or spinach, may dye the plastic parts. Discolouration will not affect the appliance's functioning and is normal.</p>

### PLEASE NOTE

- ▶ If you cannot solve the problem by carrying out the steps described above, our Customer Service will help you free of charge.
- ▶ **Clean the device before you send it to customer service** ([info@prolineaustralia.com.au](mailto:info@prolineaustralia.com.au)).

## 8 Disposal of the Old Device

Old electric and electronic devices frequently still contain valuable materials. However, they also contain damaging substances, which were necessary for their functionality and safety. If these were put in the non-recyclable waste or were handled incorrectly, they could be detrimental to human health and the environment. Therefore, do not put your old device into the non-recyclable waste under any circumstances.

### PLEASE NOTE

- ▶ Utilise the collection point, established in your town, to return and recycle old electric and electronic devices. If necessary, contact your local council, local refuse collection service or your dealer for information.
- ▶ Ensure that your old device is stored safely away from children until it is taken away.

### 8.1 Disposal of the packaging

The packaging protects the device against damages during transit. The packaging materials are selected in accordance with environmentally compatible and recycling-related points of view and can therefore be recycled. Returning the packaging back to the material loop saves raw materials and reduces the quantities of accumulated waste.

Check with your local council for proper disposal and recycling procedures.





## 9 Guarantee

### Your Pro-Line Australia 24-month Repair or Replacement Warranty

Pro-Line warrants this appliance to the first purchaser and subject to the stated conditions:

This warranty only applies to appliances purchased and used in Australia or New Zealand and covers any defects in material or workmanship in the manufactured product within the first 24 months of warranty, from the date of purchase. In addition, the motor only, does not include switching gear or PCB, has a 20 year guarantee from the date of purchase.

To make a warranty claim you must visit Pro-line Australia online at [www.prolineaustralia.com.au/warrantyclaim](http://www.prolineaustralia.com.au/warrantyclaim)

If a product is found to be faulty there is a 90 day return policy from the date of purchase. Products returned to store MUST be accompanied by a valid proof of purchase.

For warranty claims outside of 90 days from date of purchase, product will be repaired or replaced at our discretion. Repair or replacement costs of the product will be covered under warranty by Pro-line.

Goods presented for repair may be replaced by refurbished goods of the same type rather than being repaired. Refurbished parts may be used to repair the goods. The benefits given to you by this warranty are in addition to other rights and remedies of the consumer law in relation to the goods or services to which this warranty relates.

Our goods come with guarantees that cannot be excluded under the Australian Consumer Law. You are entitled to a replacement or refund for a major failure and compensation for any other reasonably foreseeable loss or damage. You are also entitled to have the goods repaired or replaced if goods fail to be of acceptable quality and the failure does not amount to a major failure.

#### Conditions of this Warranty:

1. This product has been fully installed in accordance with the user manual installation instructions.
2. The warranty extends only to repairing or replacing any component that proves to be defective in material or workmanship.
3. The warranty does not cover defects occasioned by misuse, alterations, accidents, or used for other than the intended purpose.
4. The warranty does not cover damage to the product caused by accident, fire, floods, power surges or black outs.
5. Proof of purchase is required for warranty claims. Please keep purchase receipt in a safe place.







Pro-Line Australia  
PO Box 4187  
Norwood South LPO  
South Australia 5067

Email: [info@prolineaustralia.com.au](mailto:info@prolineaustralia.com.au)  
Web: [www.prolineaustralia.com.au](http://www.prolineaustralia.com.au)